



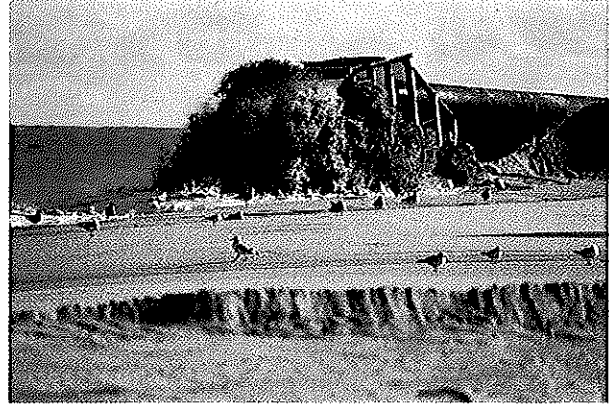
U.S. ARMY CORPS OF ENGINEERS

BUILDING STRONG[®]

Factsheet

Overview

The U.S. Army Corps of Engineers' (USACE) Philadelphia District received construction funding to move forward with the contracting process to repair the Bethany/South Bethany and Fenwick Island Coastal Storm Damage Reduction projects in Delaware. This funding is provided through the Flood Control & Coastal Emergencies (FCCE) program, which enables USACE to repair projects damaged by severe storm events at 100 percent Federal cost.



The U.S. Army Corps of Engineers' Philadelphia District and the state of Delaware are moving forward with repair work for the Bethany/South Bethany, Fenwick Island, and Lewes projects.

Additionally, USACE is moving forward with repair work for the Roosevelt Inlet-Lewes project. This work will be funded through regular appropriations and will be cost-shared with the State of Delaware. All three projects are joint efforts of the Army Corps' Philadelphia District and the Delaware Department of Natural Resources and Environmental Control. Construction would not likely take place until the fall timeframe.

Process

For Bethany/South Bethany and Fenwick Island, work involves dredging sand from approved offshore borrow areas. The sand is pumped through a series of pipes onto the beaches. The sand is then graded into a dune and berm template designed to reduce potential damages to infrastructure, businesses, and homes. Work at Lewes will be accomplished via truckfill.

Project Information

Project	Initial construction	Most recent construction	Design Details
<i>Bethany/South Bethany</i>	2008	2013 (post Sandy FCCE)	150 ft berm backed by dune at elevation 16
<i>Fenwick Island</i>	2005	2013 (post Sandy FCCE)	200 ft berm backed by dune at elevation 17.7
<i>Lewes</i>	2004	2013 (post Sandy FCCE)	100 ft berm backed by dune at elevation 14