

Urban and Community Forestry



Thursday, September 12, 2024



Thursday, September 12, 2024

Technical Assistance

- Sick tree calls
- Tree ID
- Tree species recommendations and placement



Educational Assistance

- Schools
- HOA's
- Non-profit organizations
- Outreach Events



Thursday, September 12, 2024



Financial Assistance

- Annual grant program
 - tree planting and inventory
- Ash removal for New Castle County
- Invasive species removal
- Inflation Reduction Act (IRA) for underserved communities



Why are trees important??

- improve air and water quality
- Provide shade
- mitigate stormwater run-off
- Habitat and food for wildlife
- save on heating and cooling costs
- beautify the landscape
- increase property values
- foster a general sense of well-being
 - Reduce stress, improve mental health

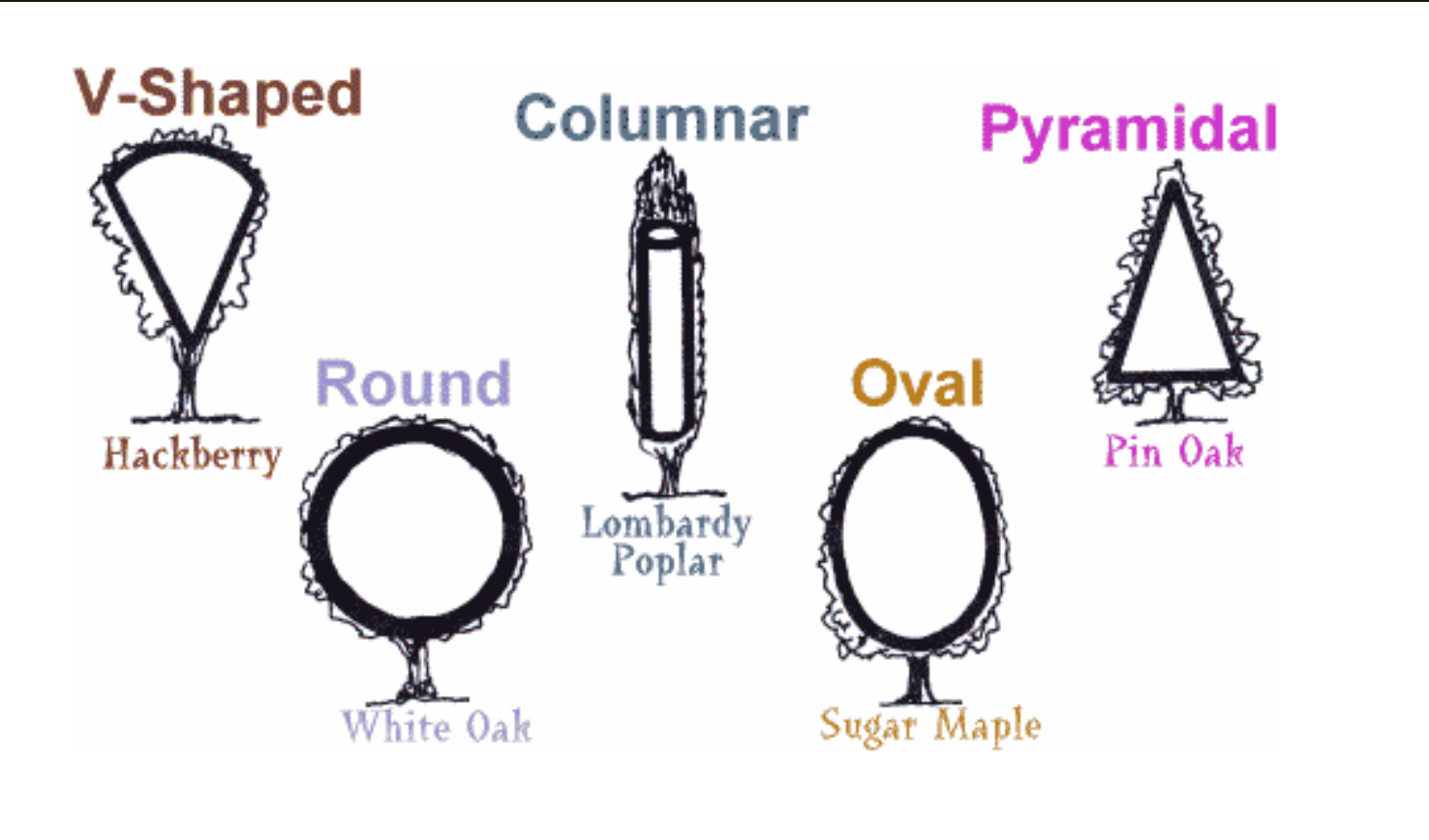


Right Tree, Right Place

- Trees purpose
 - aesthetics, privacy, shade, windbreak, street tree
 - deciduous or evergreen
- Planting Site limitations
 - max height and spread, sun exposure, soil conditions, power lines, underground utilities
 - Fruit and hardiness zone



Tree Shape

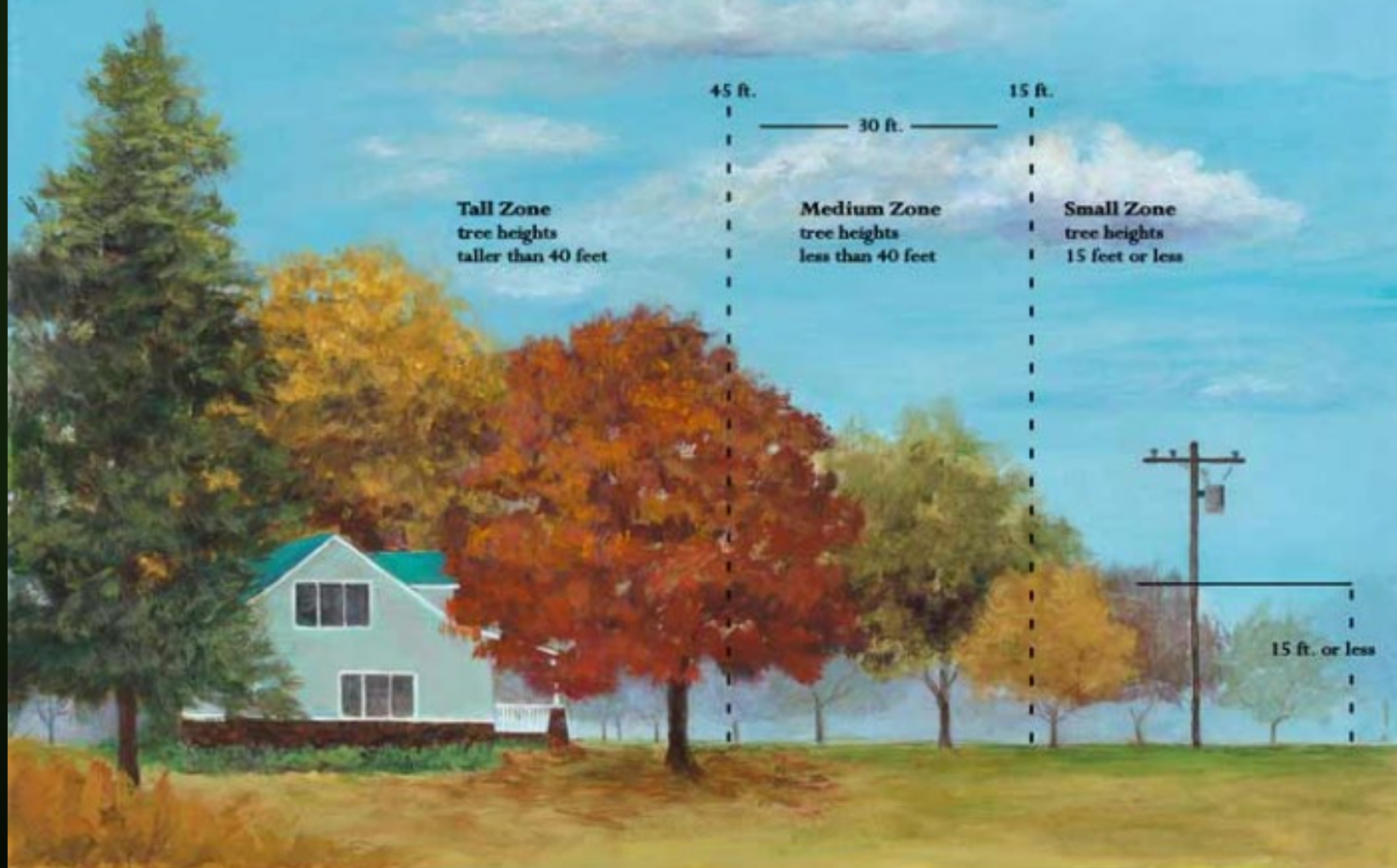


Surrounding area

- Power lines?
- Underground utilities?
- Sidewalks/buildings?
- Soil conditions?
- Full sun/partial shade?



Planting Distances From Power Lines



Spacing Recommendations

Tree Size	Allowable Space	From building	From sidewalks
Small (30' or less)	6-15'	8-10'	3-4'
Medium (30' - 70')	30-40'	15'	5-6'
Large (70' or more)	40-50'	20'	8'

Underground Utilities

Size of tree at maturity

- 15' then 15' away
- 30' then 30' away



Soil Conditions

- Texture/structure
 - Clay – holds the most water – drains slow
 - Silt – moderate water-holding capacity. Can retain water for longer periods of time.
 - Sand – drains quickly – less water holding capacity



Sun/shade

Full sun; canopy trees

Walnut

Red maple

Tulip poplar

Oak trees

Partial; understory trees

American beech

Holly

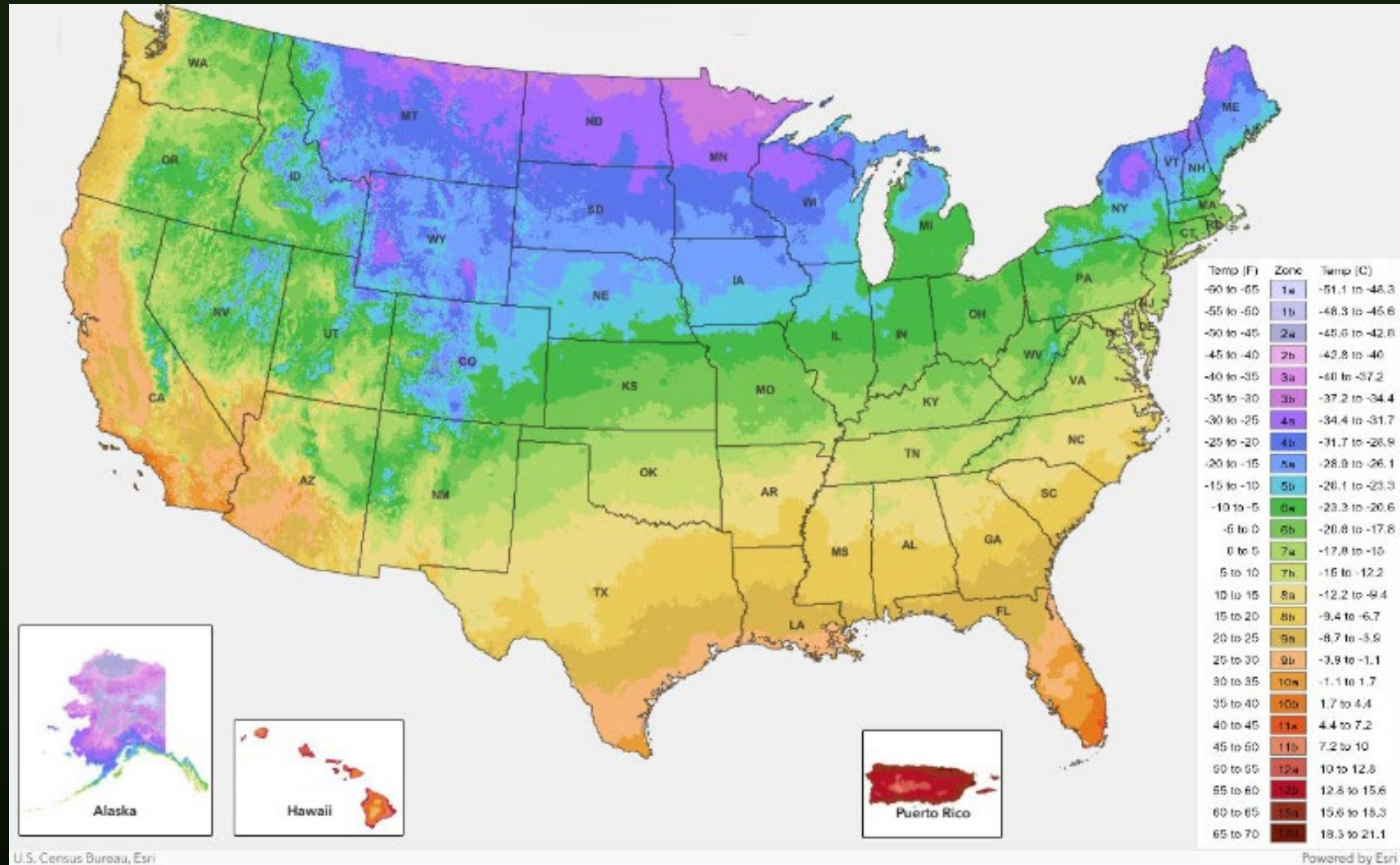
Dogwood

Redbud



Hardiness Zone

DE is zone
7a, 7b, 8a



[Delaware Hardiness Zones, Growing Zones and Planting Zones \(plantmaps.com\)](https://plantmaps.com)



Thursday, September 12, 2024

These examples represent typical mature heights in city conditions. Check the Arboday.org Tree Guide for expected mature height and crown spread of trees you are considering.



Funding opportunities



Thursday, September 12, 2024



U&CF Annual Grant Program

- Homeowners associations, municipalities, non-profits
- Tree Planting/Inventory projects
- Public land/open space
- \$500 - \$5000
- 50/50 matching in cash or in-kind
- Site Visits required
- Reimbursement



Invasive Species Removal

- Tree of Heaven and Bradford Pear
- Stump treatment
- HOA's, Communities, non-profit and municipalities
- Native species replacement encouraged but not required
- Match waiver
- Funding from \$500-\$7,000
- Applications open November 2024
- Guidelines posted in October





Delaware Department of Agriculture

Urban and Community Forestry Grant Program

Selector

Grant Year

All Years

Watershed

All Watersheds

Senator

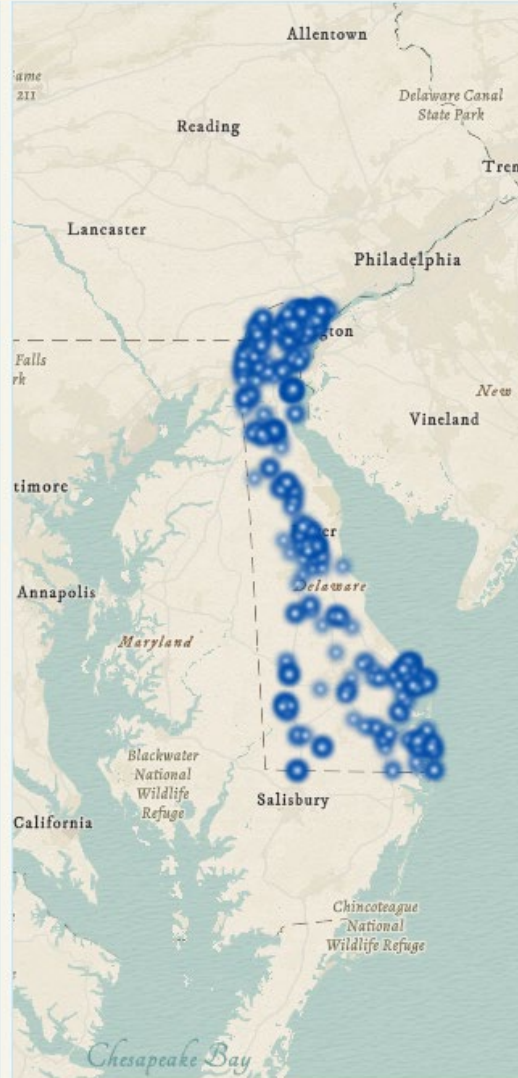
All Senators

Representative

All Representatives

School District

All Districts



Grant Dollars

\$2,350,781.91

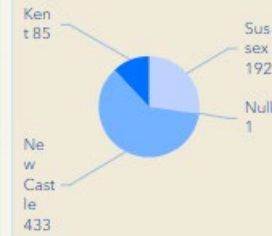
Grants

711

Remaining



Grants By County



QUESTIONS??

- Taryn.Davidson@delaware.gov
- DDA-UrbanForestry@delaware.gov
- de.gov/delawaretrees

